

# Integral C1

Designed for small spaces like switch boxes, the Integral C1 offers five push button inputs to allow integration with traditional push button switches. Each push button input can be programmed via Casambi for on/off, scene selection, dimming and other functions. The C1 is part of the Integral range of controllers offering miniaturised design and expansive control of DALI, Phase-dim, Relay and PWM luminaires.



## Features

### Control

The Integral C1 offers full control of up to five push buttons. Each push button can control on/off, scenes, dimming and other functions offering full functionality. When integrated with Casambi's product eco-system, the C1 allows control of small rooms up to large buildings via the Casambi mesh network.



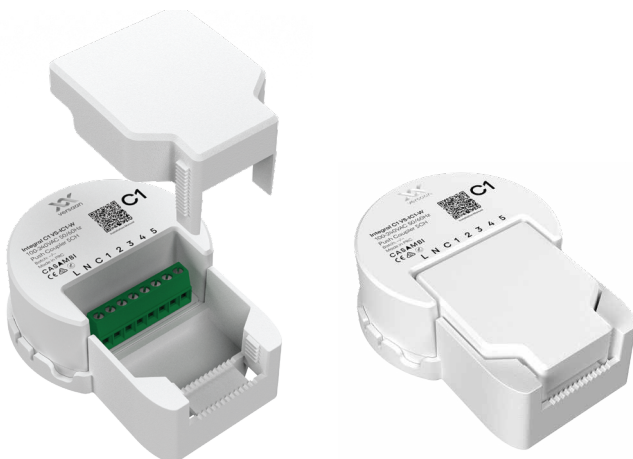
### Compact

Boasting a small form factor the C1 fits into switch boxes allowing easy connection to traditional push buttons switches.



### Versatile

The Integral Surface Kit allows any Integral product to be surface mounted while also providing strain relief with the built-in snap cable clamp. Two M3 screws are secured below the Integral during installation providing a streamlined aesthetic.



### Identify

The built-in LED indicator makes identifying the C1 effortless. Useful when pre-commissioning Casambi networks before product is sent to site or when more than one Integral product is installed in the same switchbox.



### Explore

Explore the Integral range, a comprehensive control solution featuring DALI, Phase-dim, Relay, PWM, and Push Button control—all seamlessly integrated into a single enclosure architecture. Designed to provide complete control of luminaires with support for multiple dimming and control types in residential and commercial projects.



# Integral C1



## Specifications

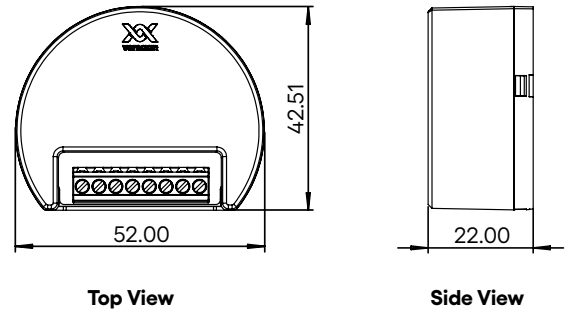
### Order Codes

Product SKU	Description
VS-IC1-W	Integral C1 - White
VS-I-SMW	Integral Surface Kit - White

### Technical Specification

<b>Dimensions (VS-IC1-W)</b>	52x42.51x22mm
<b>Dimensions (VS-I-SMW)</b>	74.75x55.10x24.69mm
<b>Control</b>	Casambi
<b>Wireless Range</b>	98m/LR 180m (OA LOS)
<b>Supply</b>	100-240VAC 50/60Hz
<b>Input</b>	5x Push Buttons
<b>Type</b>	Live/Energised
<b>Operating Temperature</b>	0 to 55C
<b>Wiring</b>	Loop in/loop out
<b>Terminal Capacity</b>	1.5 mm <sup>2</sup>
<b>Mounting Screws</b>	2x M3 Flat Head
<b>Screw Centres</b>	25mm
<b>Material</b>	Flame Retardant ABS+PC
<b>Ingress Protection</b>	IP20
<b>Transceiver Frequency</b>	2.4GHz ISM Band
<b>Warranty</b>	5 Years

### Dimensions - VS-IC1-W (mm)



### Dimensions - VS-I-SMW (with C1 Installed)

